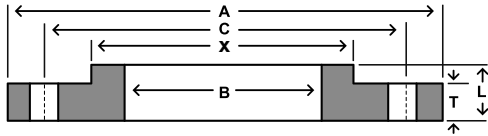


Class 125 LW (175–150psi*)

SAME AS AWWA CLASS D HUB



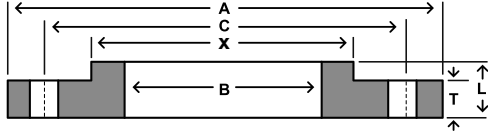
Nom Size						Drilling				Weight
	OD	Thickness	Dia at Base	Bore	LTH	Bolt Circle	Bolt Length	Hole Dia	# of Holes	
	A	T	X	B	L	C				
4	9.00	0.500	5.312	4.57	0.875	7.50	2.75	0.750	8	7
5	10.00	0.562	6.438	5.66	1.250	8.50	3.25	0.875	8	9
6	11.00	0.562	7.562	6.72	1.250	9.50	3.25	0.875	8	11
8	13.50	0.562	9.688	8.72	1.250	11.75	3.25	0.875	8	15
10	16.00	0.688	12.000	10.88	1.250	14.25	3.75	1.000	12	22
12	19.00	0.688	14.375	12.88	1.250	17.00	3.75	1.000	12	33
14	21.00	0.750	15.750	14.19	1.250	18.75	4.00	1.125	12	43
16	23.50	0.750	18.000	16.19	1.250	21.25	4.00	1.125	16	52
18	25.00	0.750	19.875	18.19	1.250	22.75	4.25	1.250	16	52
20	27.50	0.750	22.000	20.19	1.250	25.00	4.25	1.250	20	61
22	29.50	1.000	24.000	22.19	1.750	27.25	5.00	1.375	20	92
24	32.00	1.000	26.125	24.19	1.750	29.50	5.00	1.375	20	105
26	34.25	1.000	28.500	26.19	1.750	31.75	5.00	1.375	24	119
28	36.50	1.000	30.500	28.19	1.750	34.00	5.00	1.375	28	130
30	38.75	1.000	32.500	30.19	1.750	36.00	5.00	1.375	28	144
32	41.75	1.125	34.750	32.19	1.750	38.50	6.00	1.625	28	182
34	43.75	1.125	36.750	34.19	1.750	40.50	6.00	1.625	32	191
36	46.00	1.125	38.750	36.19	1.750	42.75	6.00	1.625	32	207
38	48.75	1.125	40.750	38.19	1.750	45.25	6.00	1.625	32	237
40	50.75	1.125	43.000	40.19	1.750	47.25	6.00	1.625	36	249
42	53.00	1.250	45.000	42.19	1.750	49.50	6.25	1.625	36	287
44	55.25	1.250	47.000	44.19	2.250	51.75	6.25	1.625	40	334
46	57.25	1.250	49.000	46.19	2.250	53.75	6.25	1.625	40	348
48	59.50	1.375	51.000	48.19	2.500	56.00	6.50	1.625	44	407
50	61.75	1.375	53.000	50.19	2.500	58.25	7.00	1.875	44	421
52	64.00	1.375	55.000	52.19	2.500	60.50	7.00	1.875	44	448
54	66.25	1.375	57.000	54.19	2.500	62.75	7.00	1.875	44	475
60	73.00	1.500	63.000	60.19	2.750	69.25	7.25	1.875	52	605
66	80.00	1.500	69.000	66.19	2.750	76.00	7.25	1.875	52	718
72	86.50	1.500	75.000	72.19	2.750	82.50	7.25	1.875	60	803
78	93.00	1.750	81.250	78.19	3.000	89.00	8.25	2.125	64	1010
84	99.75	1.750	87.500	84.19	3.000	95.50	8.25	2.125	64	1160
90	106.50	2.000	93.750	90.19	3.250	102.00	9.50	2.438	68	1430
96	113.25	2.000	100.000	96.19	3.250	108.50	9.50	2.438	68	1618

DIMENSIONS ARE IN INCHES | WEIGHTS ARE IN POUNDS

NOTES: HUB FLANGES ARE TO BE USED ON PIPE THAT HAS AN OD EQUAL TO THE NOMINAL PIPE SIZE IN THE FIRST COLUMN. *PRESSURE RATINGS ARE FROM AWWA TABLE 3 CLASS D. PRESSURE RATING AT ATMOSPHERIC TEMPERATURE: SIZES 4-12" INCLUSIVE, 175 PSI; SIZES LARGER THAN 12", 150 PSI. THESE FLANGES HAVE THE SAME DIAMETER AND DRILLING AS ANSI/ASME B16.1 CLASS 125 CAST IRON FLANGES. IN SIZES 24" AND SMALLER THEY ALSO MATCH UP TO ANSI/ASME B16.5 150-PSI STANDARD FOR STEEL FLANGES.

Class 125 S0 (275psi*)

SAME AS AWWA TABLE 4 CLASS E

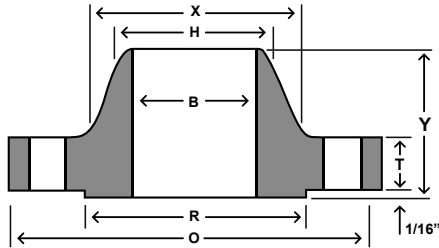


Nom Size						Drilling				Weight
	OD	Thickness	Dia at Base	Bore	LTH	Bolt Circle	Bolt Length	Hole Dia	# of Holes	
	A	T	X	B	L	C				
4	9.00	0.938	5.312	4.57	1.312	7.50	3.75	0.750	8	13
5	10.00	0.938	6.438	5.66	1.438	8.50	4.00	0.875	8	14
6	11.00	1.000	7.562	6.72	1.562	9.50	4.00	0.875	8	17
8	13.50	1.125	9.688	8.72	1.750	11.75	4.50	0.875	8	28
10	16.00	1.188	12.000	10.88	1.938	14.25	5.00	1.000	12	37
12	19.00	1.250	14.375	12.88	2.188	17.00	5.00	1.000	12	59
14	21.00	1.375	15.750	14.19	2.250	18.75	5.50	1.125	12	78
16	23.50	1.438	18.000	16.19	2.500	21.25	5.75	1.125	16	101
18	25.00	1.562	19.875	18.19	2.688	22.75	6.00	1.250	16	110
20	27.50	1.688	22.000	20.19	2.875	25.00	6.50	1.250	20	139
22	29.50	1.812	24.000	22.19	3.125	27.25	6.75	1.375	20	162
24	32.00	1.875	26.125	24.19	3.250	29.50	7.00	1.375	20	197
26	34.25	2.000	28.500	26.19	3.375	31.75	7.25	1.375	24	235
28	36.50	2.062	30.750	28.19	3.438	34.00	7.50	1.375	28	269
30	38.75	2.125	32.750	30.19	3.500	36.00	7.75	1.375	28	303
32	41.75	2.250	35.000	32.19	3.625	38.50	8.50	1.625	28	375
34	43.75	2.312	37.000	34.19	3.688	40.50	8.50	1.625	32	401
36	46.00	2.375	39.250	36.19	3.750	42.75	8.75	1.625	32	452
38	48.75	2.375	41.750	38.19	3.750	45.25	8.75	1.625	32	528
40	50.75	2.500	43.750	40.19	3.875	47.25	9.00	1.625	36	573
42	53.00	2.625	46.000	42.19	4.000	49.50	9.25	1.625	36	648
44	55.25	2.625	48.000	44.19	4.000	51.75	9.25	1.625	40	688
46	57.25	2.688	50.000	46.19	4.062	53.75	9.25	1.625	40	733
48	59.50	2.750	52.250	48.19	4.125	56.00	9.50	1.625	44	799
50	61.75	2.750	54.250	50.19	4.125	58.25	10.00	1.875	44	827
52	64.00	2.875	56.500	52.19	4.250	60.50	10.25	1.875	44	922
54	66.25	3.000	58.750	54.19	4.375	62.75	10.50	1.875	44	1024
60	73.00	3.125	65.250	60.19	4.500	69.25	11.00	1.875	52	1253
66	80.00	3.375	71.500	66.19	4.875	76.00	11.50	1.875	52	1623
72	86.50	3.500	78.500	72.19	5.000	82.50	11.75	1.875	60	1922
78	93.00	3.875	84.500	78.19	5.375	89.00	13.00	2.125	64	2279
84	99.75	3.875	90.500	84.19	5.375	95.50	13.00	2.125	64	2586
90	106.50	4.250	96.750	90.19	5.750	102.00	14.25	2.438	68	3061
96	113.25	4.250	102.750	96.19	5.750	108.50	14.25	2.438	68	3432

DIMENSIONS ARE IN INCHES | WEIGHTS ARE IN POUNDS

NOTES: COMMONLY REFERRED TO AS A CLASS 150# IN LARGER DIAMETER. CAN BE FURNISHED WITH A RAISED FACE. *PRESSURE RATINGS FROM AWWA TABLE 4 CLASS E. PRESSURE RATING AT ATMOSPHERIC TEMPERATURE IS 275 PSI. THESE FLANGES HAVE THE SAME OD AND DRILLING AS ANSI/ASME B16.1 CLASS 125 CAST IRON FLANGES. IN SIZES 24" AND SMALLER, THEY ALSO MATCH ANSI/ASME B16.5 150-PSI STANDARD FOR STEEL FLANGES.

Class 125 WN



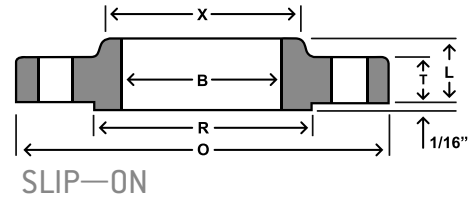
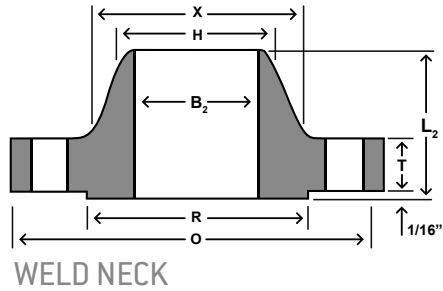
Nom Size								Drilling				Weight
	OD	Thickness	OD of RF	Dia at Base	Bore	Dia Bevel	LTH	Bolt Circle	Bolt Length	Hole Dia	# of Holes	
	O	T	R	X	B	H	Y					
6	11.00	1.00	8.50	7.56		6.63	3.50	9.50	4.00	0.88	8	24
8	13.50	1.13	10.63	9.69		8.63	4.00	11.75	4.50	0.88	8	39
10	16.00	1.19	12.75	12.00		10.75	4.00	14.25	5.00	1.00	12	52
12	19.00	1.25	15.00	14.38		12.75	4.50	17.00	5.00	1.00	12	80
14	21.00	1.38	16.25	15.75		14.00	5.00	18.75	5.50	1.13	12	110
16	23.50	1.44	18.50	18.00		16.00	5.00	21.25	5.75	1.13	16	140
18	25.00	1.56	21.00	19.88		18.00	5.50	22.75	6.00	1.25	16	150
20	27.50	1.69	23.00	22.00		20.00	5.69	25.00	6.50	1.25	20	180
22	29.50	1.81	25.25	24.25		22.00	5.88	27.25	6.75	1.38	20	225
24	32.00	1.88	27.25	26.13		24.00	6.00	29.50	7.00	1.38	20	255
26	34.25	2.00	29.50	28.50		26.00	5.00	31.75	7.25	1.38	24	265
28	36.50	2.06	31.50	30.75		28.00	5.06	34.00	7.50	1.38	28	295
30	38.75	2.13	33.75	32.75		30.00	5.13	36.00	7.75	1.38	28	340
32	41.75	2.25	36.00	35.00		32.00	5.25	38.50	8.50	1.63	28	410
34	43.75	2.31	38.00	37.00		34.00	5.31	40.50	8.50	1.63	32	440
36	46.00	2.38	40.25	39.25		36.00	5.38	42.75	8.75	1.63	32	495
38	48.75	2.38	42.25	41.75		38.00	5.38	45.25	8.75	1.63	32	570
40	50.75	2.50	44.25	43.75		40.00	5.50	47.25	9.00	1.63	36	620
42	53.00	2.63	47.00	46.00		42.00	5.63	49.50	9.25	1.63	36	710
44	55.25	2.63	49.00	48.00		44.00	5.63	51.75	9.25	1.63	40	750
46	57.25	2.69	51.00	50.00		46.00	5.68	53.75	9.25	1.63	40	800
48	59.50	2.75	53.50	52.25		48.00	5.75	56.00	9.50	1.63	44	870
50	61.75	2.75	55.50	54.25		50.00	5.75	58.25	10.00	1.88	44	900
52	64.00	2.88	57.50	56.50		52.00	5.88	60.50	10.25	1.88	44	1000
54	66.25	3.00	59.75	58.75		54.00	6.00	62.75	10.50	1.88	44	1100
60	73.00	3.13	66.00	65.25		60.00	6.13	69.25	11.00	1.88	52	1350
66	80.00	3.38	-	71.50		66.00	6.38	76.00	11.50	1.88	52	1775
72	86.50	3.50	-	78.50		72.00	6.50	82.50	11.75	1.88	60	2100
84	99.75	3.88	-	90.50		84.00	6.88	95.50	13.00	2.13	64	2825
96	113.25	4.25	-	102.75		96.00	7.25	108.50	14.25	2.44	68	3800

To Be Specified by Purchaser.

DIMENSIONS ARE IN INCHES | WEIGHTS ARE IN POUNDS

NOTES: CAN BE FURNISHED WITH A FLAT FACE. THESE FLANGES HAVE THE SAME OD AND DRILLING AS ANSI/ASME B16.1 CLASS 125 CAST IRON FLANGES.

Class 250 (300psi*)



Nom. Size					Bore		LTH		Drilling				Weights		
	OD	Thickness	OD of RF	Dia at Base	WN	SO	Weld Neck	SO	Bolt Circle	Bolt Length	Hole Dia	# Holes	Weld Neck	Slip-on	Blind
	O	T	R	X	B ₂	B	L ₂	L							
26	38.25	2.81	32.44	30.50	To be specified by Purchaser.	26.25	5.81	4.75	34.50	10.00	1.88	28	534	531	916
28	40.75	2.94	34.94	33.00		28.25	5.94	5.00	37.00	10.25	1.88	28	629	637	1095
30	43.00	3.00	37.19	35.25		30.25	6.00	5.00	39.25	10.50	1.88	28	702	707	1236
32	45.25	3.12	39.44	37.50		32.25	6.12	5.12	41.50	10.75	1.88	28	793	801	1424
34	47.50	3.25	41.44	39.50		34.25	6.25	5.25	43.50	11.25	1.88	28	882	889	1649
36	50.00	3.38	43.69	41.50		36.25	6.38	5.38	46.00	12.00	2.13	32	969	970	1884
38	52.25	3.44	45.69	43.50		38.25	6.44	5.50	48.00	12.00	2.13	32	1057	1062	2094
40	54.25	3.56	47.94	45.75		40.25	6.56	5.50	50.25	12.25	2.13	36	1158	1172	2336
42	57.00	3.69	50.44	47.75		42.25	6.94	5.62	52.75	12.50	2.125	36	1318	1288	2673
44	59.25	3.75	52.69	49.75		44.25	7.00	5.75	55.00	12.75	2.13	36	1423	1397	2935
46	61.50	3.88	54.94	51.75		46.25	7.12	5.88	57.25	13.00	2.13	40	1536	1510	3272
48	65.00	4.00	58.44	54.00		48.25	7.25	6.00	60.75	13.25	2.13	40	1824	1797	3768

DIMENSIONS ARE IN INCHES | WEIGHTS ARE IN POUNDS

NOTES: *AWWA PRESSURE RATING AT ATMOSPHERIC TEMPERATURE IS 300 PSI. THESE FLANGES HAVE THE SAME OD AND DRILLING AS ANSI/ASME B16.1 CLASS 250 CAST IRON FLANGED